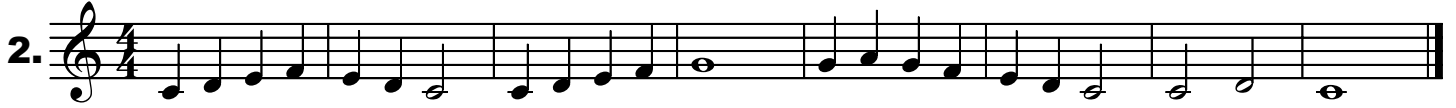


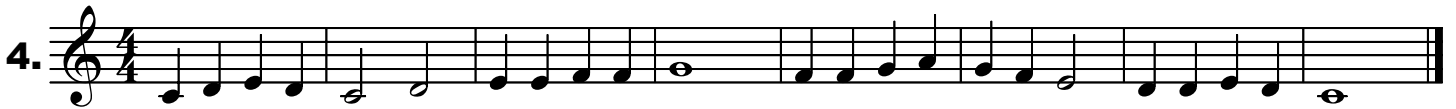
Fixed Do Sight-reading Exercises

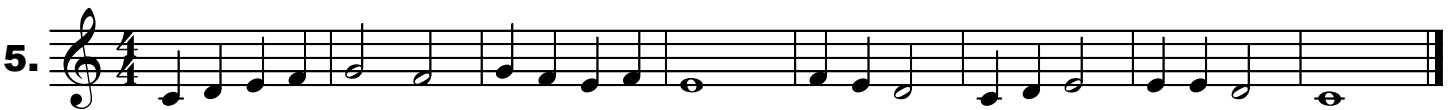
Key of Do

1. 

2. 

3. 

4. 

5. 

6. 

Fixed Do Sight-reading Exercises

Key of Do



Easy Fixed Do Sight-reading Exercises

Key of Re



Fixed Do Sight-reading Exercises Key of Fa



Fixed Do Sight-reading Exercises

Key of Fa

8. 

9. 

10. 

11. 

12. 

13. 

14. 

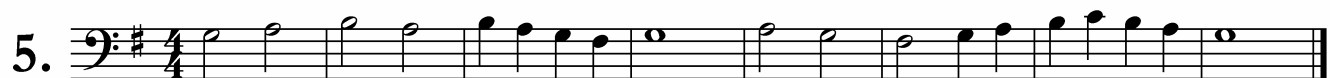
Miscellaneous Short Sight-reading Exercises

Use Fixed Do



Miscellaneous Short Sight-reading Exercises

Use Fixed Do



Miscellaneous Short Sight-reading Exercises

Use Fixed Do

Two-Part

Two-part musical exercise, first system. The music is in 2/4 time and uses a treble clef. The key signature has one flat (B-flat). The melody consists of quarter notes: C4, D4, E4, F4, G4, A4, Bb4, C5, Bb4, A4, G4, F4, E4, D4, C4. The bass line consists of quarter notes: C3, D3, E3, F3, G3, A3, Bb3, C4, Bb3, A3, G3, F3, E3, D3, C3.

Two-part musical exercise, second system. The melody continues with quarter notes: C4, D4, E4, F4, G4, A4, Bb4, C5, Bb4, A4, G4, F4, E4, D4, C4. The bass line continues with quarter notes: C3, D3, E3, F3, G3, A3, Bb3, C4, Bb3, A3, G3, F3, E3, D3, C3.

Three-Part

Three-part musical exercise, first system. The music is in 3/4 time and uses a treble clef. The key signature has one flat (B-flat). The melody consists of quarter notes: C4, D4, E4, F4, G4, A4, Bb4, C5, Bb4, A4, G4, F4, E4, D4, C4. The bass line consists of quarter notes: C3, D3, E3, F3, G3, A3, Bb3, C4, Bb3, A3, G3, F3, E3, D3, C3.

Three-part musical exercise, second system. The melody continues with quarter notes: C4, D4, E4, F4, G4, A4, Bb4, C5, Bb4, A4, G4, F4, E4, D4, C4. The bass line continues with quarter notes: C3, D3, E3, F3, G3, A3, Bb3, C4, Bb3, A3, G3, F3, E3, D3, C3.

Miscellaneous Short Sight-reading Exercises

Use Fixed Do

Two-Part

A two-part musical exercise in G major (one sharp) and 3/4 time. The first staff (treble clef) contains a melody of quarter notes: G4, A4, B4, C5, B4, A4, G4, F#4, E4, D4, C4. The second staff (treble clef) contains a bass line of quarter notes: G3, A3, B3, C4, B3, A3, G3, F#3, E3, D3, C3.

A two-part musical exercise in G major (one sharp) and 3/4 time. The first staff (treble clef) contains a melody of quarter notes: G4, A4, B4, C5, B4, A4, G4, F#4, E4, D4, C4. The second staff (treble clef) contains a bass line of quarter notes: G3, A3, B3, C4, B3, A3, G3, F#3, E3, D3, C3.

Three-Part

A three-part musical exercise in B-flat major (two flats) and 4/4 time. The first staff (treble clef) contains a melody of quarter notes: Bb4, Ab4, Gb4, Fb4, Eb4, D4, C4, Bb4, Ab4, Gb4, Fb4, Eb4, D4, C4. The second staff (treble clef) contains a bass line of quarter notes: Bb3, Ab3, Gb3, Fb3, Eb3, D3, C3, Bb3, Ab3, Gb3, Fb3, Eb3, D3, C3. The third staff (treble clef) contains a bass line of quarter notes: Bb2, Ab2, Gb2, Fb2, Eb2, D2, C2, Bb2, Ab2, Gb2, Fb2, Eb2, D2, C2.

Continued

Three staves of musical notation in G minor (one flat) and 2/4 time. The first staff contains a melodic line with eighth and quarter notes. The second staff features a more rhythmic line with eighth notes and a sharp sign. The third staff is a bass line with eighth notes.

Miscellaneous Short Sight-reading Exercises

Use Fixed Do

Two-Part

Two staves of musical notation in D major (two sharps) and 3/4 time. The top staff is in treble clef and the bottom staff is in bass clef. Both staves contain a sequence of notes, primarily quarter and half notes, with a final measure containing a whole note and a fermata.

Two staves of musical notation in D major (two sharps) and 3/4 time. The top staff is in treble clef and the bottom staff is in bass clef. Both staves contain a sequence of notes, primarily quarter and half notes, with a final measure containing a whole note and a fermata.