

The First Ten Minutes

Score

Michael Sital-Merle Isaac

Violin 1

Violin 2

Violin 3

Sing whichever part is more comfortable using solfeo.

Voice

Trumpet in B \flat 1

Trumpet in B \flat 2

Guitarron

Vihuela

G D G G7

Detailed description: The score is for a piece in 3/4 time with a key signature of one sharp (F#). It consists of eight staves. The Violin 1, Violin 2, Violin 3, and Voice parts are in treble clef and play a simple melody of three whole notes: G4, A4, and B4. The Trumpet in B \flat 1 and Trumpet in B \flat 2 parts are also in treble clef and play the same melody. The Guitarron part is in bass clef and plays a rhythmic accompaniment of quarter notes: G3, A3, B3, C4 in the first measure; D4, E4, F#4, G4 in the second measure; and G4, A4, B4, C5 in the third measure. The Vihuela part is in treble clef and plays a rhythmic accompaniment of quarter notes: G4, A4, B4, C5 in the first measure; D5, E5, F#5, G5 in the second measure; and G5, A5, B5, C6 in the third measure. Chord symbols G, D, G, and G7 are written below the Guitarron staff.

The First Ten Minutes

2

4

Vln. 1

Vln. 2

Vln. 3

4

B \flat Tpt. 1

B \flat Tpt. 2

4

Gtr.

C G A m

Vih.

Detailed description: This is a page of a musical score for 'The First Ten Minutes', page 2. The score is arranged in a system with seven staves. The top three staves are for Violins 1, 2, and 3, each with a treble clef and a key signature of one sharp (F#). They play a simple melody of quarter notes: C4, E4, G4, A4 in the first measure; B4, C5, B4, A4 in the second; and G4, F#4, E4, D4 in the third. The next two staves are for Horns and Trumpets. The Horn staff has a treble clef and a key signature of one sharp, playing a sustained chord of G4 and B4. The Trumpet 1 staff has a treble clef and a key signature of three sharps (F#, C#, G#), playing a sustained note of C5. The Trumpet 2 staff has a treble clef and a key signature of one sharp, playing a sustained note of G4. The Guitar staff has a bass clef and a key signature of one sharp, playing a rhythmic pattern of eighth notes: C4, E4, G4, A4, B4, C5, B4, A4, G4, F#4, E4, D4 in the first measure; G4, A4, B4, C5, B4, A4, G4, F#4, E4, D4, C4, B3 in the second; and A4, B4, C5, B4, A4, G4, F#4, E4, D4, C4, B3, A3 in the third. Below the guitar staff are guitar chord diagrams for C, G, and A m. The Violoncello staff has a treble clef and a key signature of one sharp, playing a rhythmic pattern of eighth notes: C4, E4, G4, A4, B4, C5, B4, A4, G4, F#4, E4, D4 in the first measure; G4, A4, B4, C5, B4, A4, G4, F#4, E4, D4, C4, B3 in the second; and A4, B4, C5, B4, A4, G4, F#4, E4, D4, C4, B3, A3 in the third. A rehearsal mark '4' is placed above the first measure of each staff.

This musical score page, titled "The First Ten Minutes" and numbered "3", contains six staves of music. The staves are labeled on the left as Vln. 1, Vln. 2, Vln. 3, B♭ Tpt. 1, B♭ Tpt. 2, and Gtr. Vih. (Guitar and Violoncello). The music is in the key of D major (one sharp) and 4/4 time. A rehearsal mark "7" is placed above the first measure of each staff. The Violin parts (Vln. 1, 2, 3) play a sustained whole note chord of D major (D, F#, A) in the first measure, which changes to a sustained whole note chord of G major (G, B, D) in the second and third measures. The Trumpet parts (B♭ Tpt. 1, 2) play a sustained whole note chord of D major (D, F#, A) in the first measure, which changes to a sustained whole note chord of G major (G, B, D) in the second and third measures. The Guitar and Violoncello parts play a rhythmic pattern of eighth notes in the first measure, with a D7 chord indicated below the staff. In the second and third measures, they play a rhythmic pattern of eighth notes with a G chord indicated below the staff.

The First Ten Minutes

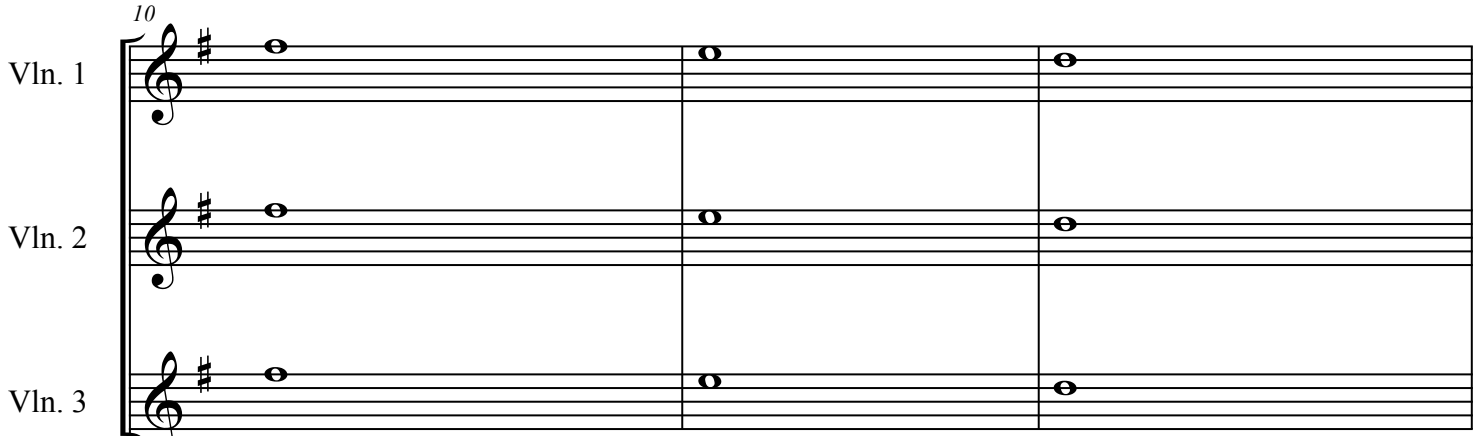
4

10

Vln. 1

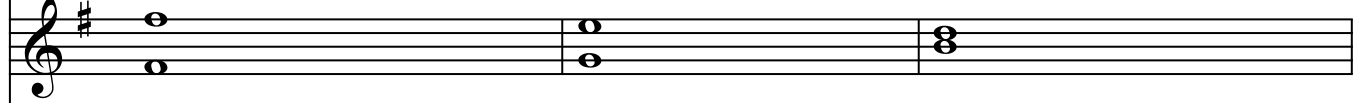
Vln. 2

Vln. 3



Violin parts 1, 2, and 3. Each part consists of a single staff with a treble clef and a key signature of one sharp (F#). The music is a simple harmonic progression of whole notes: Vln. 1 plays D4, Vln. 2 plays E4, and Vln. 3 plays F#4. The first measure starts at rehearsal mark 10. The second measure continues the same notes. The third measure continues the same notes.

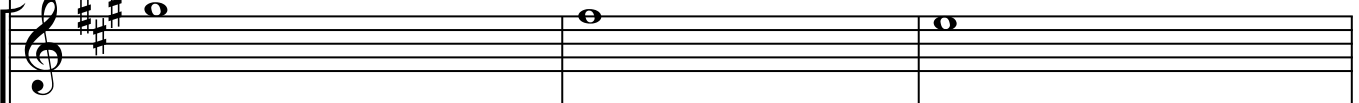
10



Violin part 4. This part consists of a single staff with a treble clef and a key signature of one sharp (F#). The music is a simple harmonic progression of whole notes: the first measure has D4 and E4, the second measure has E4 and F#4, and the third measure has F#4 and G4. The first measure starts at rehearsal mark 10.

10

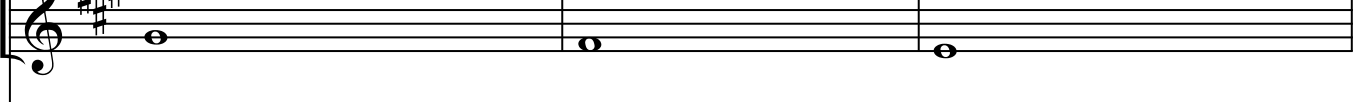
B♭ Tpt. 1



B♭ Trumpet part 1. This part consists of a single staff with a treble clef and a key signature of three sharps (F#, C#, G#). The music is a simple harmonic progression of whole notes: the first measure has D5, the second measure has E5, and the third measure has F#5. The first measure starts at rehearsal mark 10.

10

B♭ Tpt. 2

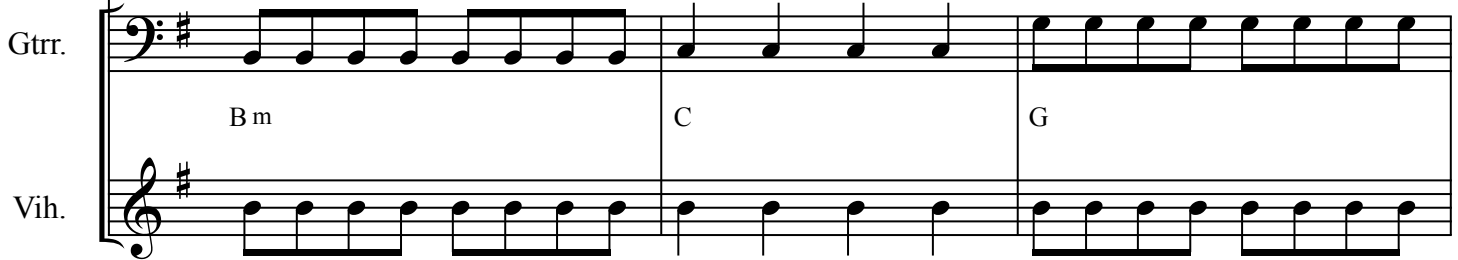


B♭ Trumpet part 2. This part consists of a single staff with a treble clef and a key signature of three sharps (F#, C#, G#). The music is a simple harmonic progression of whole notes: the first measure has D4, the second measure has E4, and the third measure has F#4. The first measure starts at rehearsal mark 10.

10

Gtr.

Vih.



Guitar and Violoncello parts. The guitar part (Gtr.) is in the bass clef with a key signature of one sharp (F#). It features a rhythmic pattern of eighth notes: G2, A2, B2, C3, D3, E3, F#3, G3, A3, B3, C4, D4, E4, F#4, G4, A4, B4, C5. The violoncello part (Vih.) is in the treble clef with a key signature of one sharp (F#). It features a rhythmic pattern of eighth notes: G2, A2, B2, C3, D3, E3, F#3, G3, A3, B3, C4, D4, E4, F#4, G4, A4, B4, C5. The first measure starts at rehearsal mark 10. Below the guitar staff, the chords Bm, C, and G are indicated for the first, second, and third measures respectively.

13

Vln. 1

Vln. 2

Vln. 3

B \flat Tpt. 1

B \flat Tpt. 2

Gtr.

Vih.

C

G

D7

The First Ten Minutes

6

16

ln. 1

ln. 2

ln. 3

16

16

pt. 1

pt. 2

16

Gtr.

G

G

G

Vih.

Detailed description of the musical score: The score is for a piece titled 'The First Ten Minutes'. It is in G major (one sharp) and 3/4 time. The page number is 6. The score is divided into three systems. The first system contains three staves for flutes (ln. 1, ln. 2, ln. 3). The second system contains two staves for parts (pt. 1, pt. 2). The third system contains two staves: guitar (Gtr.) and vihuela (Vih.). The guitar part includes chord diagrams for G major in the first three measures. The vihuela part has a steady eighth-note accompaniment. All parts begin at measure 16.

19

ln. 1

ln. 2

ln. 3

19

19

pt. 1

pt. 2

19

Gtr.

C

D7

Vih.

Detailed description of the musical score: The score is for a 3-part vocal ensemble (ln. 1, 2, 3), piano (pt. 1, 2), guitar (Gtr.), and violin (Vih.). It starts at measure 19. The key signature has one sharp (F#). The vocal parts have a melody of quarter notes. The piano parts have a similar melody. The guitar part has a bass line of quarter notes. The violin part has a sixteenth-note accompaniment. Chords C and D7 are indicated for the guitar part.

The First Ten Minutes

8

22

ln. 1

ln. 2

ln. 3

22

pt. 1

pt. 2

22

Gtr.

Vih.

Detailed description of the musical score: The score is for a piece titled 'The First Ten Minutes', page 8. It features six staves: three flutes (ln. 1, 2, 3), two parts (pt. 1, 2), guitar (Gtr.), and violin (Vih.). The key signature is one sharp (F#). The flute parts (ln. 1, 2, 3) play a melodic line starting on G4, moving up stepwise to D5 in the first measure, then down to G4 in the second measure, and ending on G4 in the third measure. The two parts (pt. 1, 2) play a similar melodic line, but pt. 1 starts on A4 and pt. 2 starts on G4. The guitar part (Gtr.) plays a bass line starting on G3, moving up stepwise to D4 in the first measure, then down to G3 in the second measure, and ending on G3 in the third measure. The violin part (Vih.) plays a rhythmic pattern of eighth notes starting on G4, moving up stepwise to D5 in the first measure, then down to G4 in the second measure, and ending on G4 in the third measure. The score is divided into three measures by vertical bar lines. A '22' is written above the first measure of each system. A 'G' chord marking is present in the guitar part in the second measure.

25

ln. 1

ln. 2

ln. 3

25

25

pt. 1

pt. 2

25

Gtr.

G Em Am D7 G C

Vih.

Detailed description of the musical score: The score is arranged in systems. The first system contains three vocal staves (ln. 1, 2, 3) and a piano part (pt. 1, 2). The second system contains a guitar part (Gtr.) with chord diagrams and a violin part (Vih.). The music is in the key of G major (one sharp). The guitar part provides harmonic support with chords: G (measure 25), Em (measure 26), Am (measure 27), D7 (measure 28), G (measure 29), and C (measure 30). The vocal parts and piano part play quarter notes, while the violin part plays quarter notes. The piano part consists of dyads of quarter notes.

The First Ten Minutes

10

28

ln. 1

ln. 2

ln. 3

28

pt. 1

pt. 2

28

Gtr.

D7 G Em C Am

Vih.

31

ln. 1

ln. 2

ln. 3

31

31

pt. 1

pt. 2

31

Gtrr.

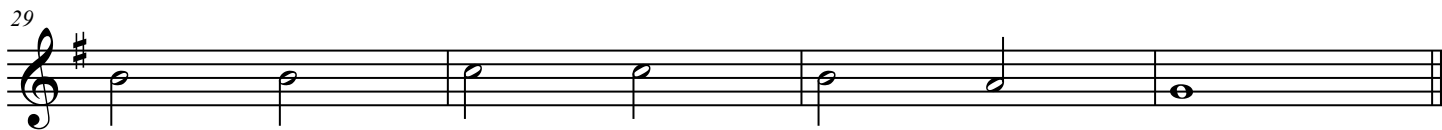
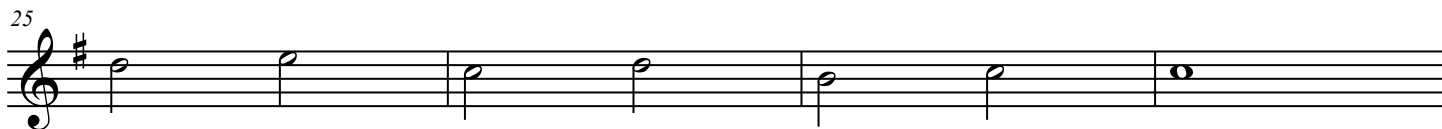
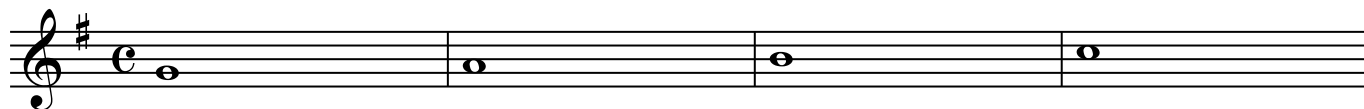
B m D7 G

Vih.

The First Ten Minutes

Violin 1, 2, 3

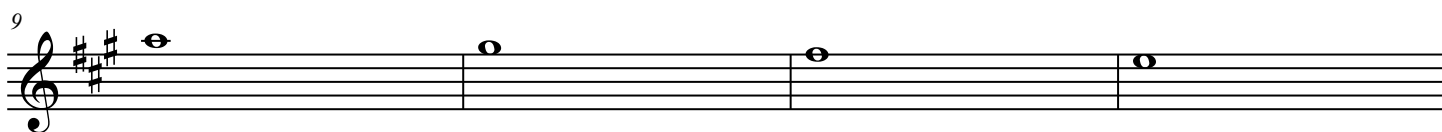
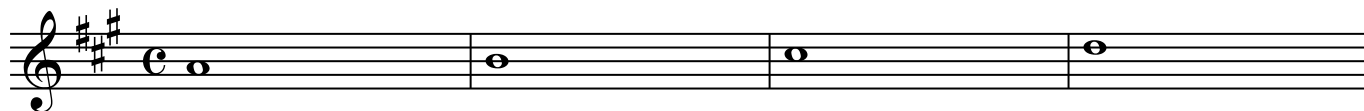
Michael Sital-Merle Isaac



The First Ten Minutes

Trumpet in B \flat 1

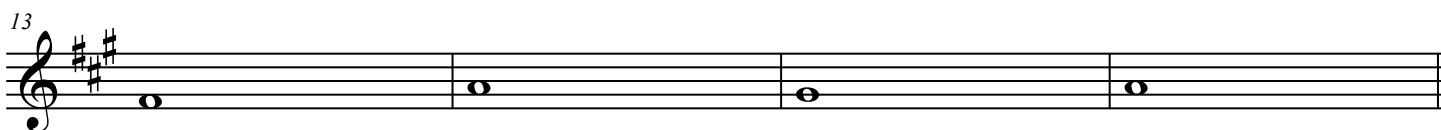
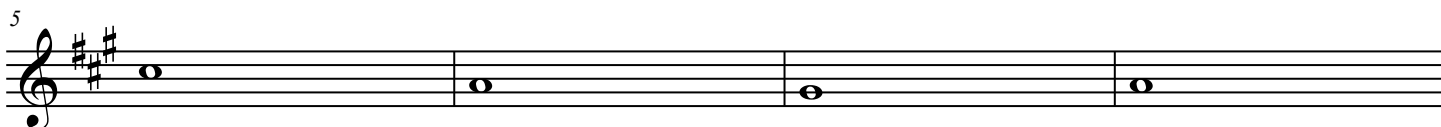
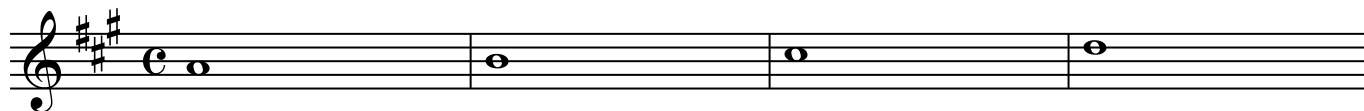
Michael Sital-Merle Isaac



The First Ten Minutes

Trumpet in B \flat 2

Michael Sital-Merle Isaac



The First Ten Minutes

Armonia

Michael Sital-Merle Isaac

Chord progression for the first six staves:

- Staff 1: G, D, G, G7, C
- Staff 2: G, Am, D7, G
- Staff 3: Bm, C, G
- Staff 4: C, G, D7, G
- Staff 5: G, G, C
- Staff 6: D7, G

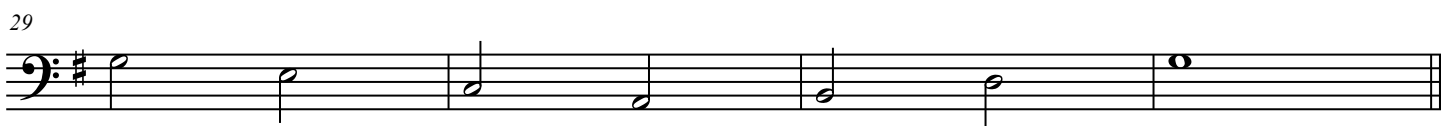
Chord progression for the last two staves:

- Staff 7: G, Em, Am, D7, G, C, D7
- Staff 8: G, Em, C, Am, Bm, D7, G

The First Ten Minutes

Guitarron

Michael Sital-Merle Isaac



The First Ten Minutes

Voice

Michael Sital-Merle Isaac

Sing whichever part is more comfortable using solfeo.

