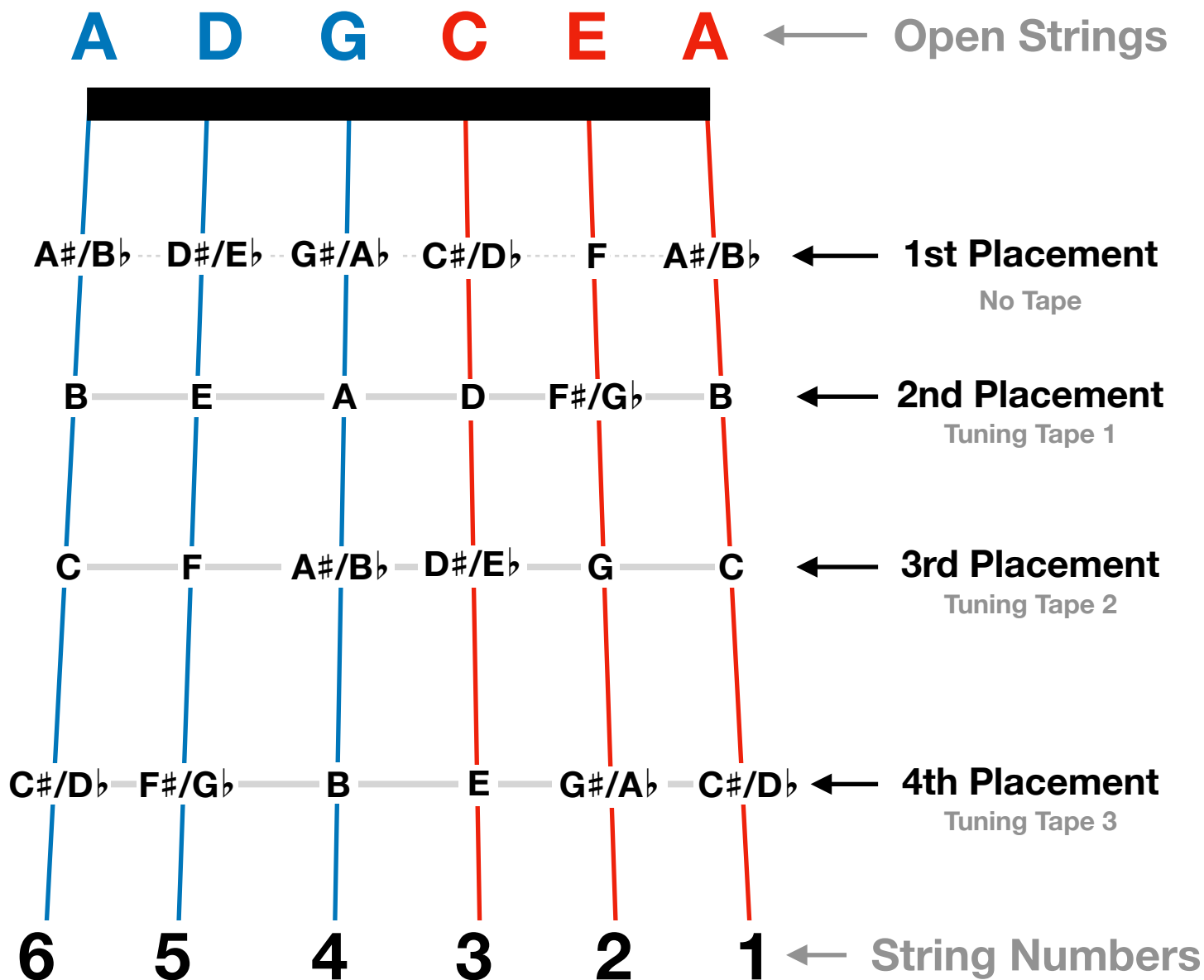


Guitarron Fingerboard

Pitch Diagram

Yvette Sital
Mariachi Director
Harney Middle School
Las Vegas, NV
sitaly@nv.ccsd.net



Left Hand



For most notes, use the **tip of your fingers** to press the strings with the left hand.
The **open palm** symbol represents when to use the middle phalanx to press the strings.

Right Hand



The **right hand thumb** pulls strings 4, 5, and 6.
The **index finger** pulls strings 2 and 3.
The **middle finger** pulls string 1.

Guitarron Fingering Chart

Yvette Sital - Mariachi Director - Harney Middle School - Las Vegas, NV - sitaly@nv.ccsd.net

A

Written either way ←

A#/B♭

B

A D G C E A

Dampen these strings

A D G C E A

1

A D G C E A

2

C

C#/D♭

D

A D G C E A

T

A D G C E A

1

2 3

2 3

A D G C E A

2

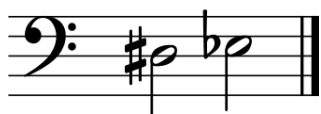


Use your **ears to tune** the octave C#/D♭. Place your 23 fingering just below the 4th placement and bend the pitch up.

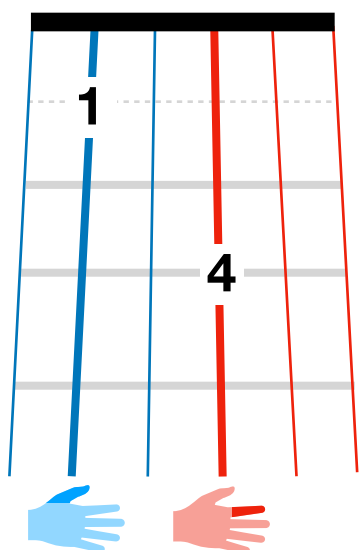
Guitarron Fingering Chart

Yvette Sital - Mariachi Director - Harney Middle School - Las Vegas, NV - sitaly@nv.ccsd.net

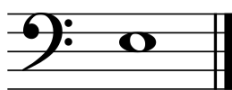
D#/E \flat



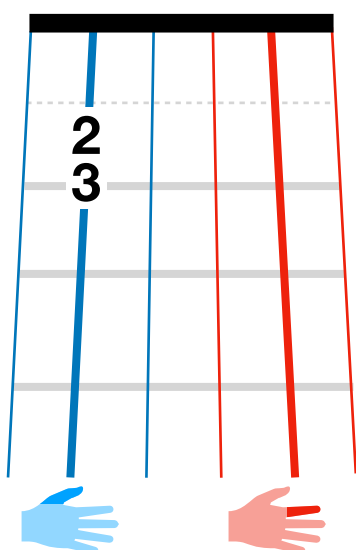
A D G C E A



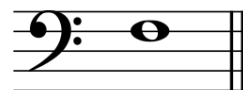
E



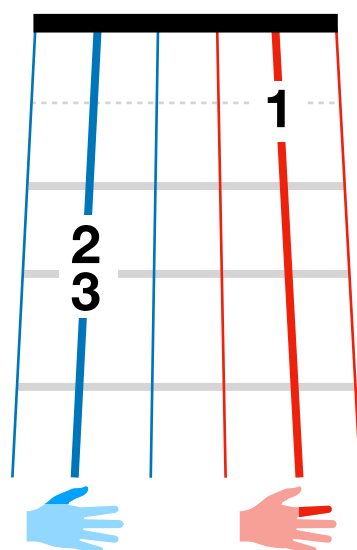
A D G C E A



F



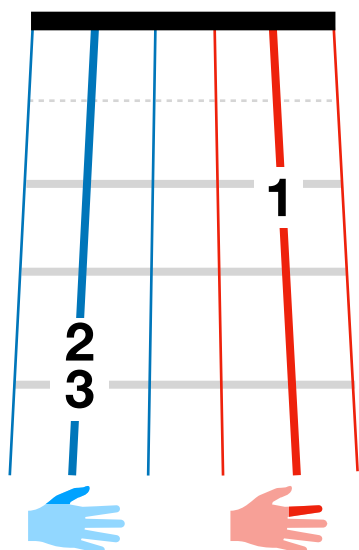
A D G C E A



F#/G \flat



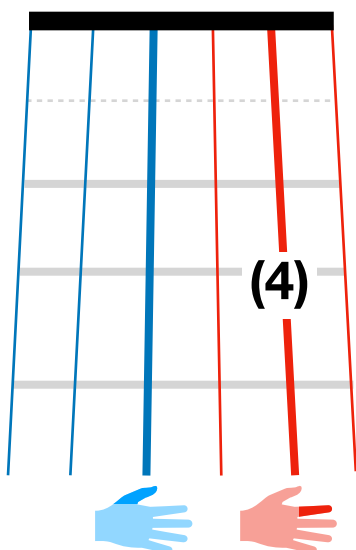
A D G C E A



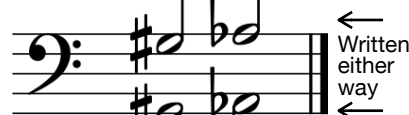
G



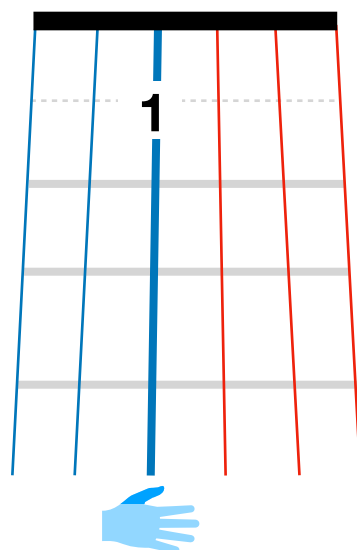
A D G C E A



G#/A \flat



A D G C E A



←
Written
either
way
←

←
Written
either
way
←



Whenever possible, pull both strings. If you can not pull both strings due to a fast tempo, play open 4th string G only.



G#/A \flat is only played with one string, not two.